



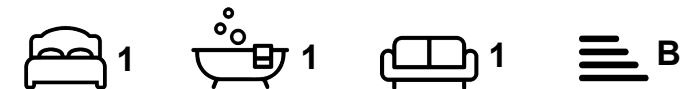
Apartment

FLAT 23, HEADINGLEY RISE WELTON ROAD, HYDE PARK, LEEDS, LS6 1EE

Per Month

£795 Per

FEATURES



SJM ©
PROPERTIES

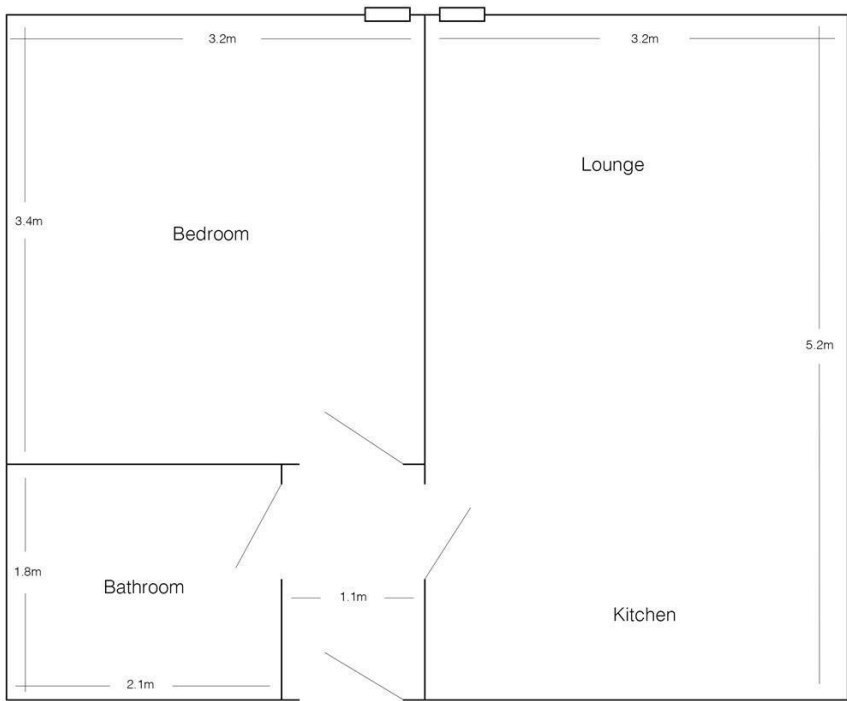
1 Bedroom Apartment located in Leeds

Modern Apartment in Hyde Park

Experience contemporary living in this modern apartment, ideally located near the picture show house and shops in Hyde Park. The apartment is part of a fully gated and enclosed block, ensuring privacy and security.

Features:

- Spacious Lounge: Enjoy the large lounge area with elegant wood floors and luxurious leather sofas, perfect for relaxation and entertaining.
- Open Plan Kitchen: A fully fitted modern kitchen, open to the lounge, equipped with a washing machine, making daily chores a breeze.
- Comfortable Bedroom: A double bedroom furnished with fitted furniture, including a desk and chair, providing ample storage and workspace.
- Stylish Bathroom: A fully tiled bathroom featuring a shower-bath, combining convenience with modern design.



23 Headingley Rise
(drawing not to scale)

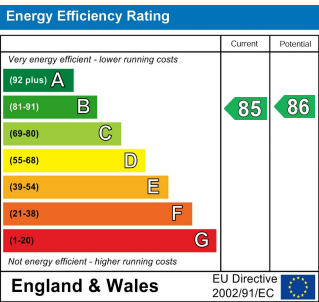
Call us on

01132782201

phil@sjm-properties.com
sjm-properties.com

Council Tax Band

A



Agents Note: Whilst every care has been taken to prepare these particulars, they are for guidance purposes only. All measurements are approximate and are for general guidance purposes only and whilst every care has been taken to ensure their accuracy, they should not be relied upon and potential buyers are advised to recheck the measurements.

SJM [©]
PROPERTIES